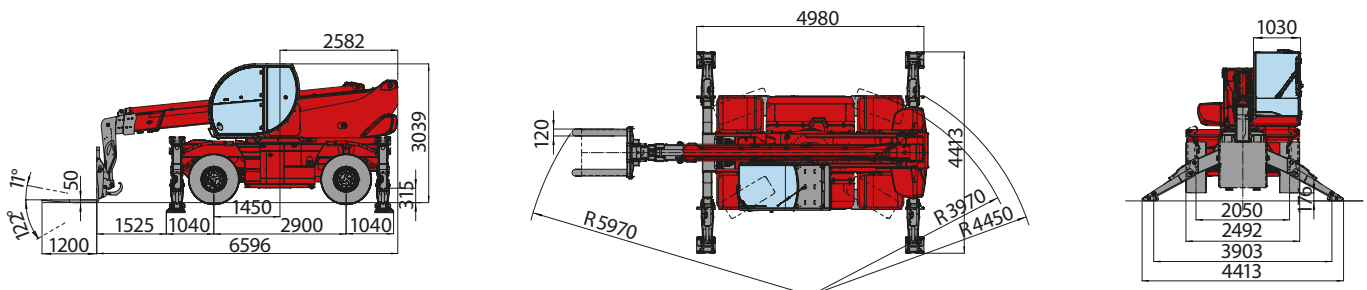


<b>MACHINE MODEL</b>	Rotating telescopic handler	RTH 4.18	
	Maximum lifting capacity	4.000 kg (center of gravity 500 mm)	
	Maximum lifting height	17,56 m	
<b>ENGINE</b>	Type	MERCEDES OM 924 LA euro 4 Interim	MERCEDES OM 904 LA Euro 3A
	Rated power	95 kW - 129 HP at 2.200 rpm	90 kW-122cv a 2.200 rpm
	Maximum torque	532 Nm at 1.400 rpm	470 Nm at 1.200 rpm
	Displacement	4,4 l	4,25 l
	Cylinders	4 in line	4 in line
	Fuel	Diesel direct injection turbocharged	Diesel direct injection turbocharged
	Cooling system	Water – intercooler	Water – intercooler
<b>TRANSMISSION</b>	Type	Hydrostatic	
	Model	Bosch – Rexroth	
	Maximum pressure	500 bar	
	Displacements	Variable displacement pump (displacement max 65 cc/r) electronically controlled Variable displacement motor (displacement max 85 cc/r)	
	Gear box	2 speeds (4,53-1,43) forward-reverse	
<b>AXLES AND BRAKES</b>	Total ratio	17,5 on each axle	
	Rear axle	Oscillating and steering with hydraulic locking	
	Front axle	Steering	
	Service brake	Hydraulically activated, oil-immersed multi-disc type on each axle	
	Parking brake	Hydraulic with negative action	
	Tyres dimensions	18x19,5	
<b>PERFORMANCE</b>	Max. travel speed	40 km/h	
	Drawbar pull	80 Kn	
	Gradeability	44%	
	Turning radius (end of forks)	5,97 m	
<b>WEIGHTS</b>	Total unladen	15.100 kg	
	Front axle unladen (boom retracted and lowered)	7.050 kg	
	Rear axle unladen (boom retracted and lowered)	8.050 kg	
<b>TANKS CAPACITIES</b>	Fuel tank	165 l	165 l
	AdBlue	40 l	
	Hydraulic oil tank	180 l	180 l
	Engine oil tank	16 l	16 l
	Cooling liquid	23 l	23 l
<b>HYDRAULIC CIRCUIT</b>	Max. operating system pressure	350 bar	
	Circuit type	Load sensing	
	Service pump	Bosch Rexroth – Variable displacement (max displacement 40 cc/r) – Flow rate 90 l/min	
	Controls for boom and turret movements	Sauer Danfoss – Electroproportional valve SIL 2	
	Controls for stabilizers	Bosch Rexroth – Electro-hydraulics controls	
	Movements control	2 joystick Sauer Danfoss with two shafts with dead man safety device Management with CAN bus technology	
<b>DIMENSIONS</b>	Max. length (boom retracted and lowered)	6.596 mm (at vertical point of forks foothold)	
	Max. width	2.492 mm (on wheels)	
	Max. height (boom retracted and lowered)	3.039 mm (on wheels)	
	Wheel base	2.900 mm	
	Ground clearance	315 mm	
<b>CONFORMTY TO STANDARDS</b>	EN 13849: concerning the safety of all controls of the machine EN 13000: concerning the standard of hydraulic cranes EN 280: concerning the standard of aerial platforms EN 15000: concerning the dynamic stability of the telescopic forklift FOPS/ROPS 97/68/CE: concerning engine emissions standards		





**Magni Telescopic Handlers srl**

Via Magellano, 22 - 41013 Castelfranco Emilia, Modena, Italia

Tel: +39 059 8630811 - Fax: +39 059 8638012

commerciale@magnith.com - www.magnith.com

The data in this brochure are informative and subject to change without notice

**EAZI ACCESS**

**086 100 3294**

**www.eazi.co.za**

**RENTAL | SALES | SERVICE | TRAINING**



Maximum lifting height: 17,56 m

Maximum reach: 14,26 m

Engine: Mercedes 95 KW - 129 HP

Electronically controlled hydrostatic transmission

Pivoting stabilizers

**RTH4.18**

# Full visibility cab MAGNI patented design



Pressurized cab  
ISO 10.263

Standard air conditioning  
and heating

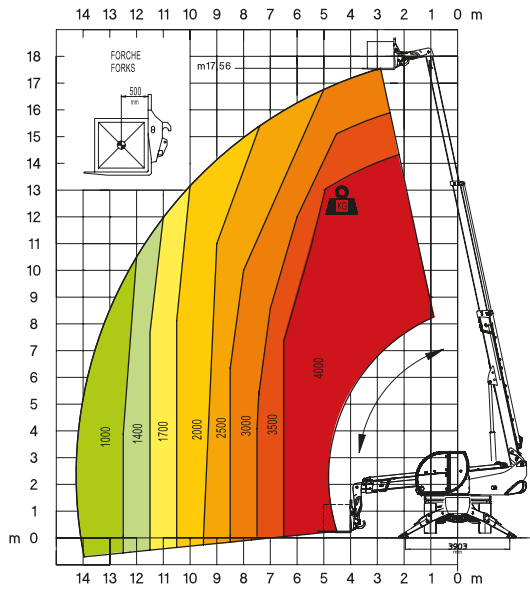
Touch screen  
display with joystick  
control system

From the left:

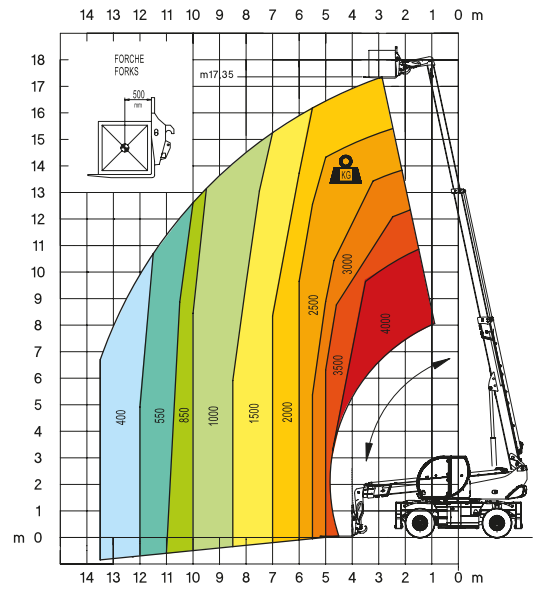
- Travelling mode screen
- Stabilizers control screen
- Load Moment Indicator screen
- Air conditioning management screen
- Customization screen



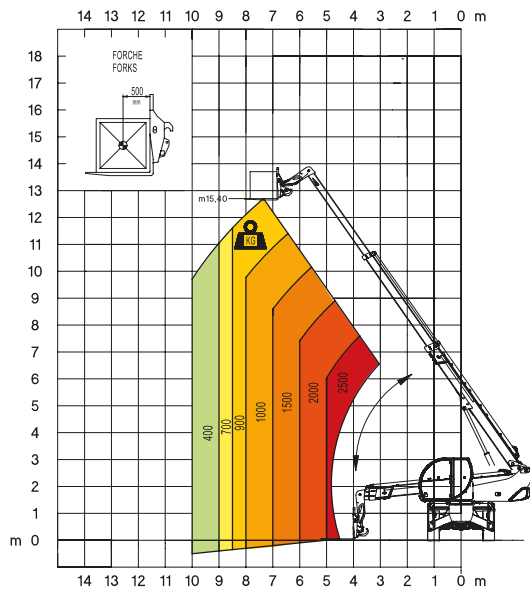
360° fully extended stabilizers load chart with forks



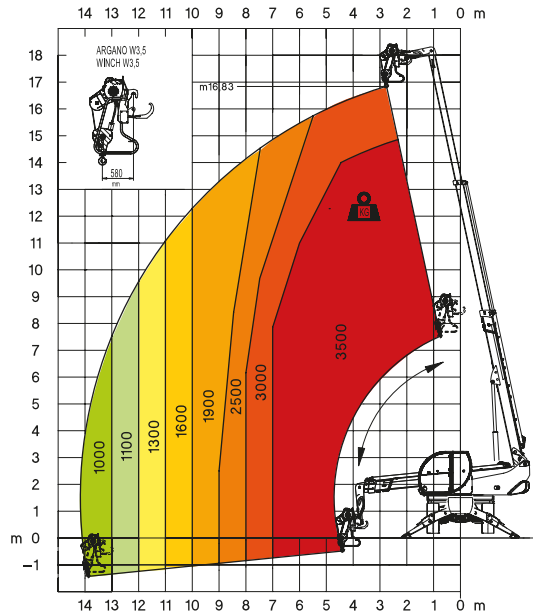
Frontal position load chart on tyres with forks



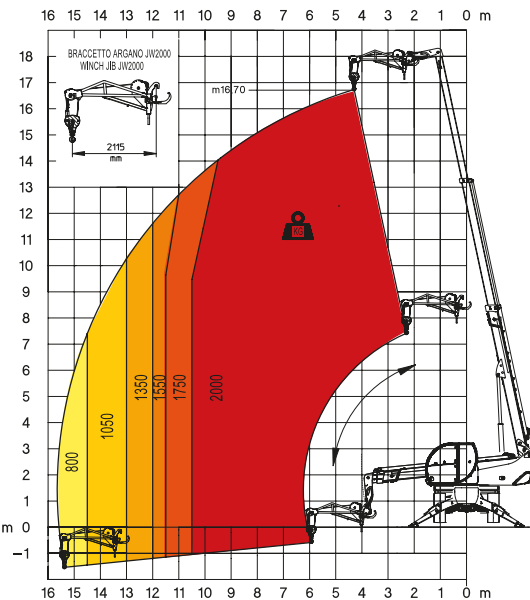
360° load chart on tyres with forks



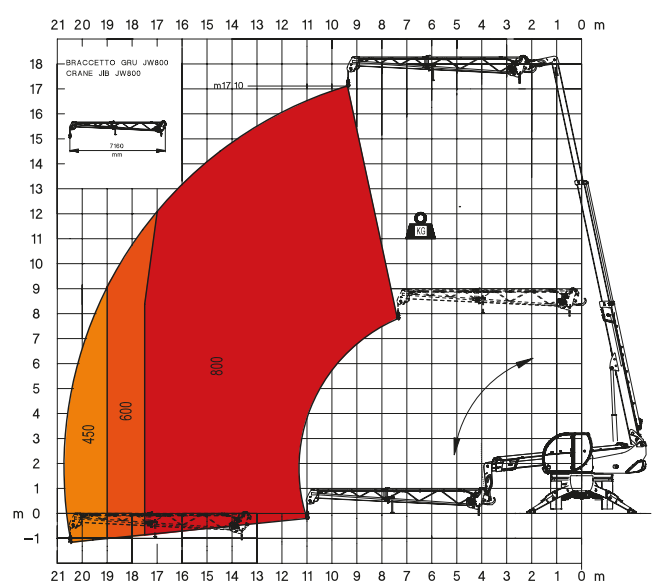
Winch W 3,5



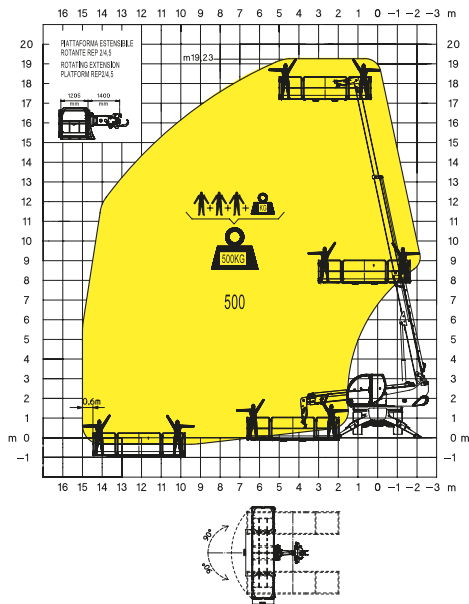
Jib with winch JW 2000



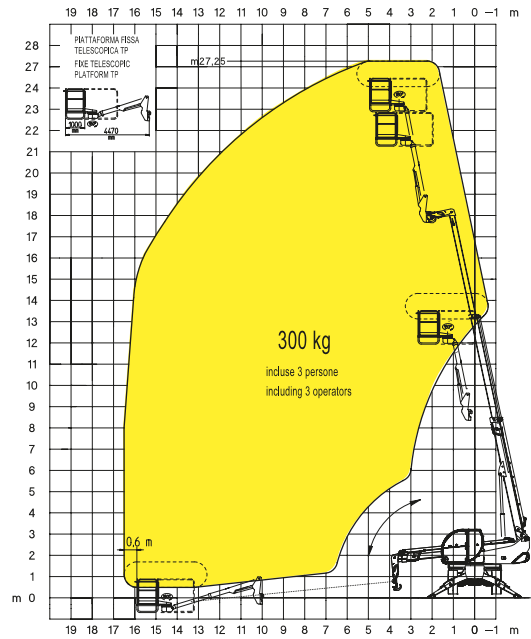
JW 800



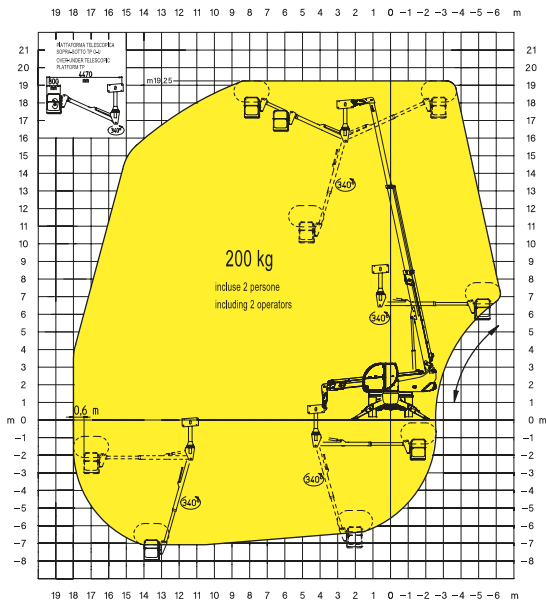
## Extendable rotating platform REP 2/5



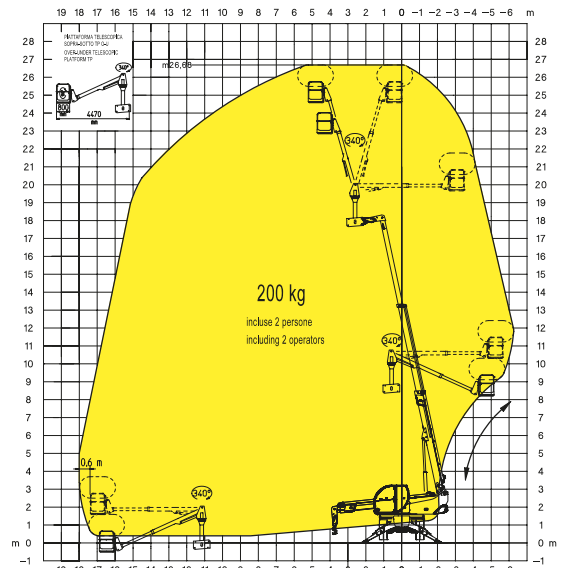
## Telescopic jib platform TP



## Positive-negative telescopic platform TP O-U



## Positive-negative telescopic platform TP O-U



A 3 in 1 machine:

- Telescopic handler
- Hydraulic crane
- Access platform

- Safety device to prevent unhooking of the attachment (MAGNI patent)

- Attachments automatic recognition system RFID

